

Sage's student council cut the red ribbon at the school library official opening. Sabra Rickman , a community volunteer and library specialist, spent many hours with Regina Dohman to purchase and catalogue books and set up a superb check out system. Jim Rickman built beautiful bookcases to hold our collection of books many of which (1000+) were donated from Kay Depretto's personal collection. Other book donations came from the Daniel family.

Sage Student Council at the library opening.



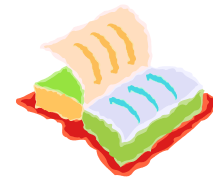
Dates to Remember

- 6 th LATE START (10 am)
- 14 th NO SCHOOL—Grade Prep
- 21 st NO SCHOOL
- 21—30 SPRING BREAK

LIBRARY CORNER

Author of the Month

Dr . Seuss



!! MANY THANKS !!

There was a good and diverse turn out at the Community Chili Feed Fundraiser. A **huge** THANK YOU to *Faith Wilkins* and *Wendy Kincaid* for organizing the event and cooking yummy chili and to *Luann Anderson* for calling BINGO.

VOLUNTEERS

We are very lucky to have regular volunteers who contribute so much to Sage students and facilities. They include *Karen Bimemiller, Wendy and Jim Kincaid, Lisa and Janelle Emard, Michelle Burkhardt, Amy Allphin, Tonia Stanfield, Jim Long, Leslie Russell, and Scott Girdner*

Julie Black has so graciously administered our state testing for several days. She is a sweet-heart and a pleasure to have here.

New Student Council Members

More students were given the opportunity to serve as representatives of their classrooms.

The newly elected are:

- Kindergarten: Zoe Long
- Grade 1: Cate Hepper
- Grade 2: Shian Varnadore
- Grade 3: Edgar Ortega
- Grade 4: Rosie Bravo-Witcraft
- Grade 5: Katahna Lang
- Grade 6: Matt Hillaire

Sage Community School Board Meeting

Thursday March 13 at 6:30 pm

Please join us!

So many fun activities in February !

PUPPETRY

Community member, David Archer shared the world of puppetry and helped the students and teachers discover that this is an art anyone can create and perform. From stories to communicating, it's just plain fun and funny too!



FOLK DANCING

Jan Stephens , a community member, came in for five Wednesday P.E. sessions of Folk Dancing for each class. She

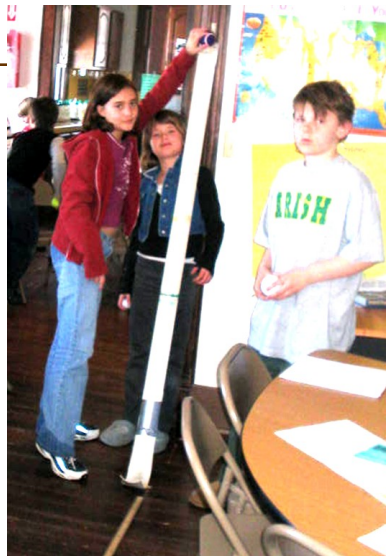


taught dances from Himalayan, Andean (contradance), Appalachian (clogging) and Swiss (polka) cultures. This was a great tie to our winter research and program on Mountains Around The World.

YOUNG SCIENTIST PROGRAM

Susan Honea of *Science Works* came to illuminate young minds and introduce the scientific process. Over four days she walked students and teachers through investigations in KINETICS and MAGNETS.

Below :Susan watches as Jeshua Bimemiller and Noah Stanfield discover magnetic potential.



Above: Gabrielle Stanfield , Hannah McClintock and Kyler Ford estimate force and motion.

NFL VISIT



Five members of the NFL visited the Sage Community with the message that "Knowledge is Power". They encouraged students to make wise choices, dream big and listen to their teachers. Their visit was sponsored by the Klamath Tribes "Don't Meth with Us Project".



Read Across America Week—March 3-7



If you or someone you know would like to come and read to Sage students please contact the office.

